

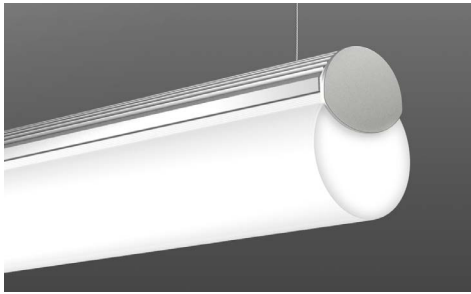
LLCR Lyon Linear LED

Surface Mount/Suspended

Remote Power Supply

JOB NAME _____

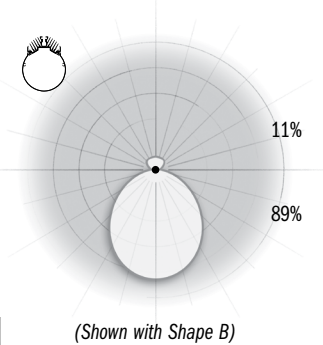
TYPE _____



Lyon Linear LED

Lyon is a family of small-scale linear LED fixtures that provide impressive performance. LEDs enable this luminaire to utilize a low-profile housing that is engineered to act as an efficient heat sink, maximizing output and life by allowing the LEDs to operate at optimal temperatures. Interior and exterior pendant, ceiling and wall mount versions make Lyon suitable for any project.

Optical Distribution

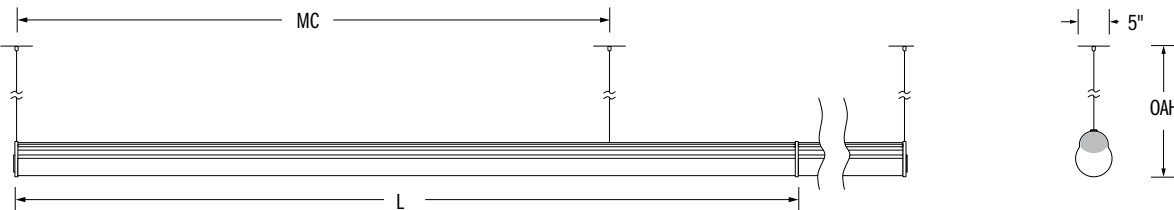


Bulkhead Shapes Five Standard Shapes

FIVE STANDARD SHAPES		SHAPES ▶				
	A	B	C	D	E	
1 LAMP						

Run Sections and Suspension

CAA Standard pendant mounting features two 5" canopies, two aircraft cables, and power cord(s) (Shown with Shape B, see above for other shapes)



Dimensions

MODULE	PENDANT MOUNTING CENTER	LENGTH
048	47.38"	49.13"
096	94.38"	96.13"

Specifications

- Extruded aluminum construction provides durable protection for internal components and is recyclable.
- External fasteners are flush mounted, providing a clean design.
- Anodized finish with some parts painted to match. Provides optimal thermal effectiveness and durable corrosion protection.
- Stem mount versions include (2) 5/8" aluminum stem(s) painted to match anodized finish.
- White power cord standard unless otherwise specified.
- Each module requires connection to a 24V constant voltage power supply. Modules over 60W may require multiple power supplies/feeds.
- SPI Lighting uses strict guidelines in LED selection to ensure the white LEDs we use meet or exceed ANSI Binning Standards (ANSI C78.377).
- RGB + Color available. Consult Factory.
- **RELATED LINKS:**
[LED Power Supplies \(24V DC\)](#)
["Designed to be LED"](#)

Technical Notes

- **INSTALLATION NOTES:** During installation the contractor is responsible to use actual fixtures to ensure accurate mounting centers from one fixture to the next along the length of the linear run.
- ETL listed to UL standards (US and Canada) for damp location. Not recommended for wet locations.
- L70 life = 50,000+ hours.
- 10% dimming with 0-10V standard with PS options



SERIES	SELECT SHAPE	SELECT MODULE	LED WATTAGE	COLOR TEMP	VOLTAGE	LENGTH OF RUN	MOUNTING	SELECT SUSPENSION	SELECT FINISH	SELECT OPTIONS
LCCR	A B C D E	048 096	L15W L29W L57W L31W L57W L115W ²	30K ¹ 35K ² 40K	24VDC	YY'	CAA CAS ³ SJB SSB	001 ⁴ 048 072 120	AN04	EMR PS PSE PSN

¹ Apply .95 multiplier for delivered lumens.
² Apply .97 multiplier for delivered lumens.
³ CAS not available in 8ft high wattage linear runs.
⁴ SJB & SSB mounting only.

Delivered Lumens

048			096		
L15W	L29W	L57W	L31W	L57W	L115W
1337	2584	5079	2762	5079	10247

Mountings and Options



CAA⁵ Standard pendant



CAS⁶



SSB⁶ Standard ceiling



SJB⁶

⁵ Painted white.
⁶ Painted to match fixture.

Code Definitions

MOUNTING	SUSPENSION	OPTIONS	FINISHES (See Color Chart for Details)
CAA 5" Canopies and Aircraft Cables	001 1"	EMR Remote Emergency Driver	AN04 Anodized Aluminum (Clear)
CAS 5" Canopies and Stems	048 48"	PS Remote Power Supply 0-10V Dimming	
SJB Surface Mount with Standard J-Box Cover	072 72"	PSE Power Supply Enclosure	
SSB Surface Mount with Standard Switch-Box Cover	120 120"	PSN No Power Supply	